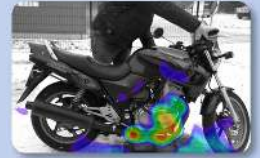


# Noise Inspector - Acoustic Cameras Technical datasheet

## USES AND APPLICATIONS

### SEE SOUND AND VIBRATION

During the last years, new technologies for the visualization of sound sources □ acoustic cameras □ became extraordinary relevant in the industry and the environment field due to its practical and intuitive use. Acoustic design of a product is an important aspect of product development. Easy to use and obvious results give engineers a new sense □ “See sound sources with your eyes”. This accelerates product development, quality control and environmental measurements enormously.



Therefore is developed the acoustic camera “Noise Inspector”. Powerful and flexible, the “Noise Inspector” improves continuously to give you the advantages of an accurate, fast and smart technology. With this system sound and vibration becomes visible in real-time. Furthermore the software is easy to use for non-acoustician and offers great functionality for professionals. The results are easy to interpret for everybody. Noise Inspector is an important product to improve your product quality, minimize development time and to save your resources.

It can be adapted to your needs due its flexibility in array design, number of microphones and state of the art algorithms. With one single system including a rich variety of arrays, the smooth transition between beamforming, holography and sound intensity measurements is possible, enabling to analyse a broad band of objects.



Everything is designed to have a very high performance. More advantages – less costs!

01dB has set up a partnership with the German company CAE Software and Systems to offer its customers the best solution for acoustic cameras.

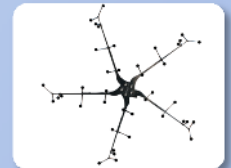
### FEATURES

#### Hardware

- Innovative arrays
- 24 bit synchronous sampling
- Channels: 8 to 1000
- High resolution results
- High resolution optical camera
- Battery operation
- Trigger and RPM channel
- Light weight
- Small packaging dimensions
- Flexible and mobile

#### Software

- Real-time sound imaging for quick results
- Post processing for high accuracy results
- Powerful HD algorithms
- AVI, WAV and result export
- Localization from 40 Hz up to 20kHz depending on the configuration
- Dynamic range more than 40 dB possible
- Acoustic weightings filters
- LabVIEW- and Matlab interface
- Batch or manual processing
- Unique real 3D beamforming
- Intuitive and easy to use



### APPLICATIONS

- Environmental acoustics
- Building acoustics
- Noise Leakage detection
- NVH
- Squeak and rattle
- Transient noise sources
- Stationary noise sources

## NOISE INSPECTOR IS THE SOLUTION

---

The Noise Inspector is designed for quick setup to save time and start immediately with measurements. Therefore we designed a system which can be setup by only one person in about one minute. Immediately after setting up the hardware, the first acoustic pictures are only one mouse click away.

4 Important parts of acoustic cameras:

- Microphone array: we offer the best well-designed arrays.
- Data acquisition (analog or digital): 24 bit resolution, anti-aliasing filters and simultaneous sampling for each microphone. It is designed for all your applications.
- Camera: we use high definition digital cameras (USB & IP camera)
- Computation Software: Our software is made to be intuitive, easy to use and powerful



## ENDLESS APPLICATIONS FOR ACOUSTIC CAMERAS

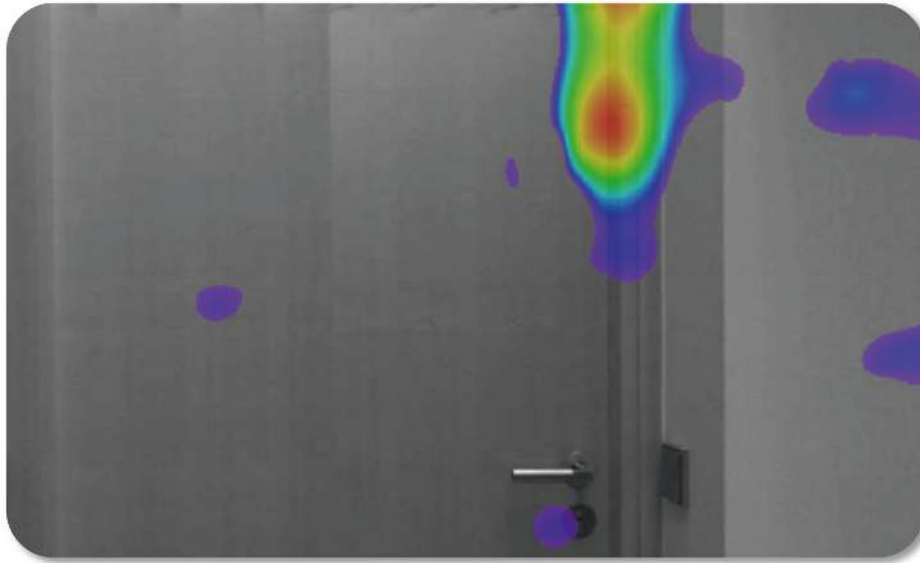
---

Our Noise Inspector is optimized to deliver best performance and most accurate results for every possible application. Depending on the used array, the system is suitable for very low to very high frequencies.

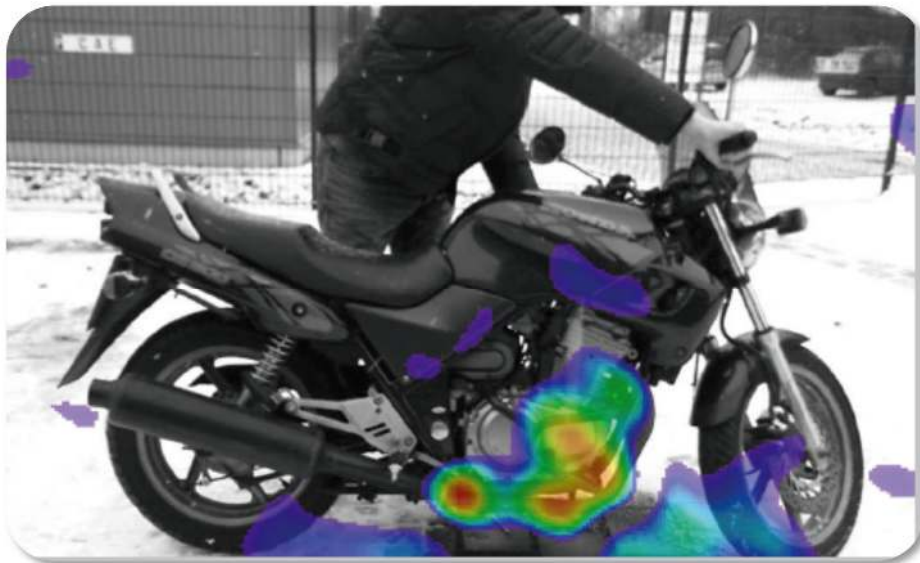
### AIRBONE NOISE OF WING TIP



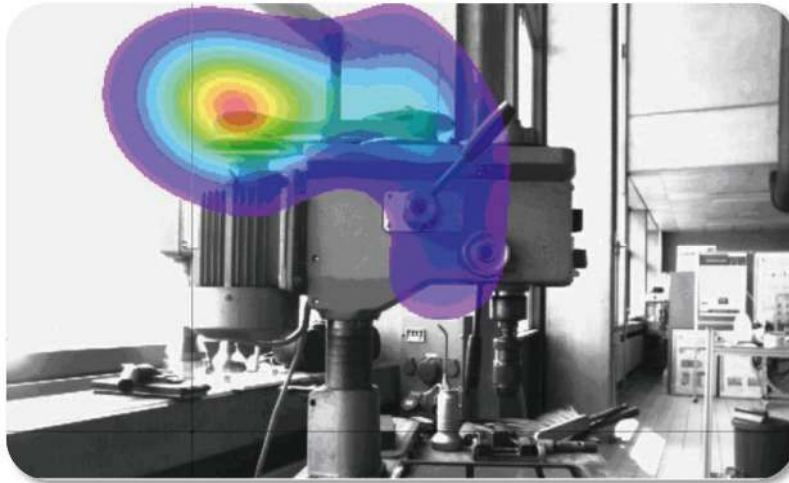
**BUILDING LEAKAGE DETECTION**



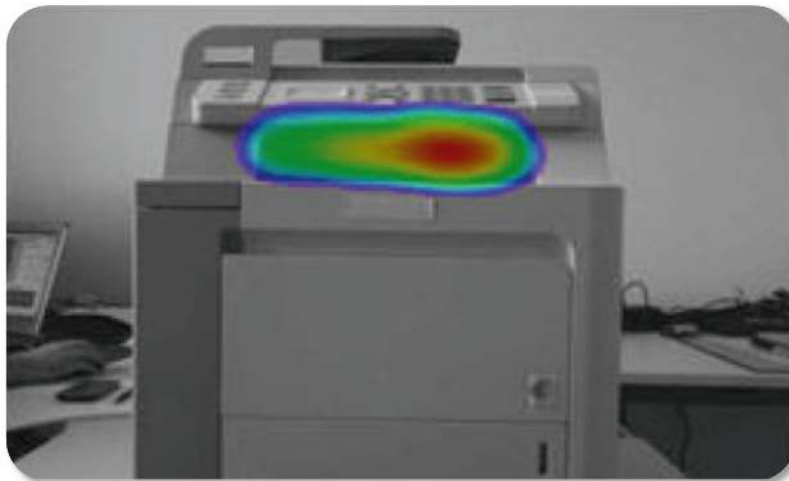
**MOTORCYCLE NOISE**



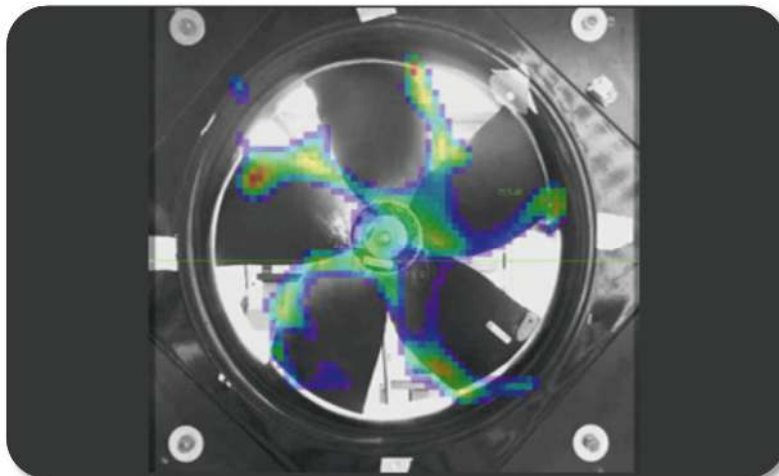
**FRICTION NOISE OF A BELT DRIVE**



**PRINTER NOISE**



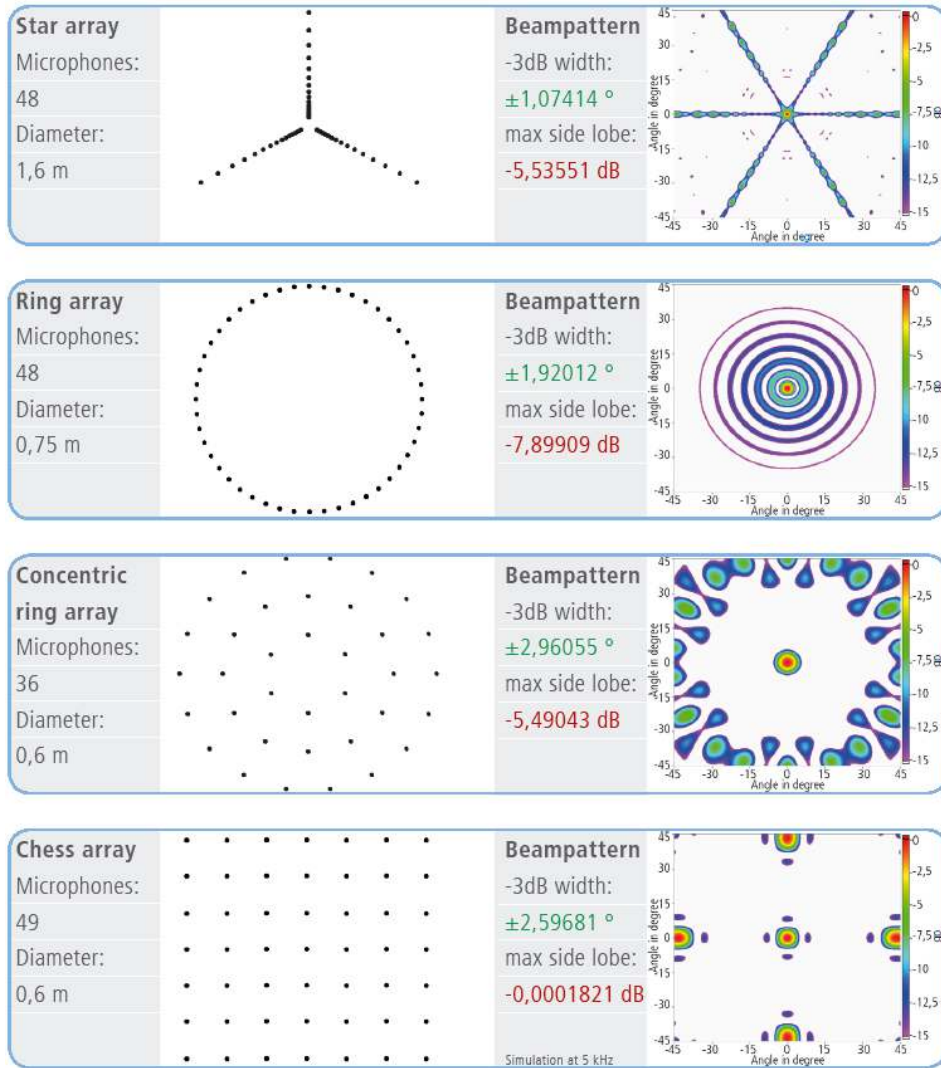
**FAN NOISE**



## THE BEST ARRAY TECHNOLOGY

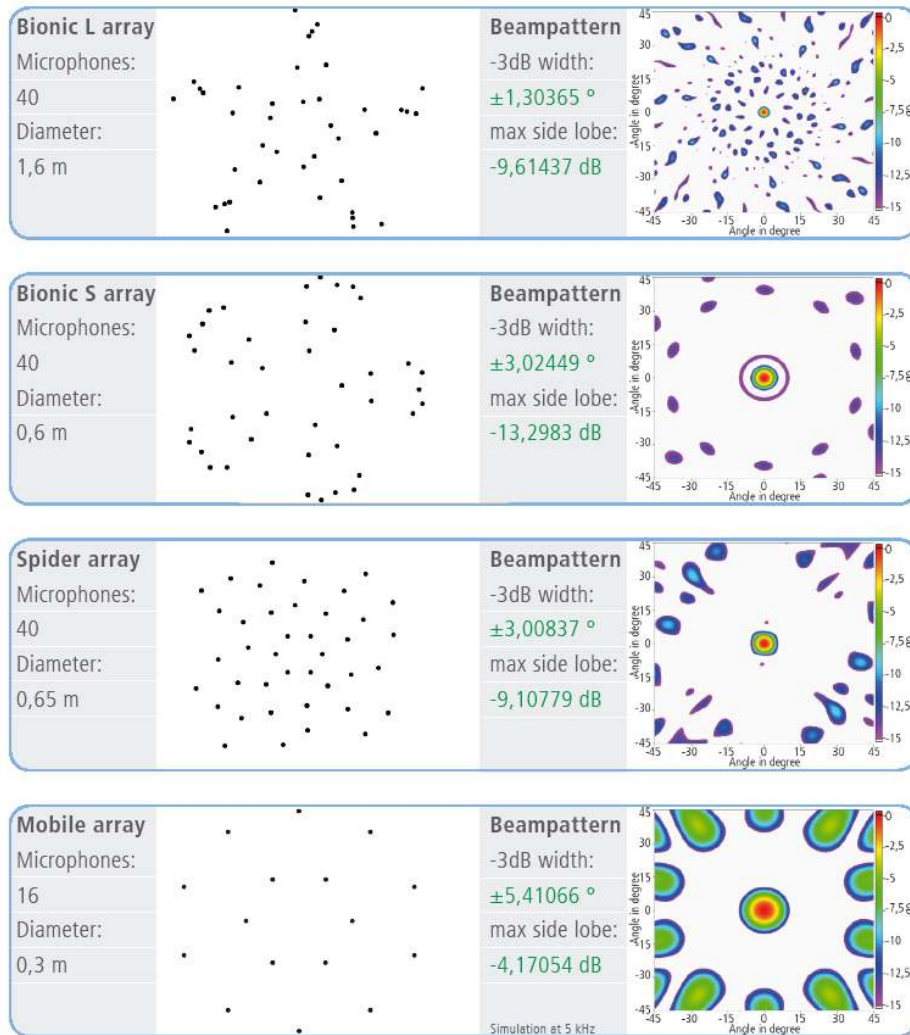
### COMMON ARRAYS

The array design is an important physical property to deliver very high resolution results. Therefore a lot of engineering know-how is put into the shape of the arrays. Standard designs give results with poor resolution and/or poor dynamic range.



## LEADING ARRAY TECHNOLOGY

As the influence of the array designs are that significant, we created a portfolio of good microphone distributions (see below). Also it is absolutely possible to create customized array designs to fulfil the customers



## EXCELLENT SOFTWARE MAKES THE DIFFERENCE

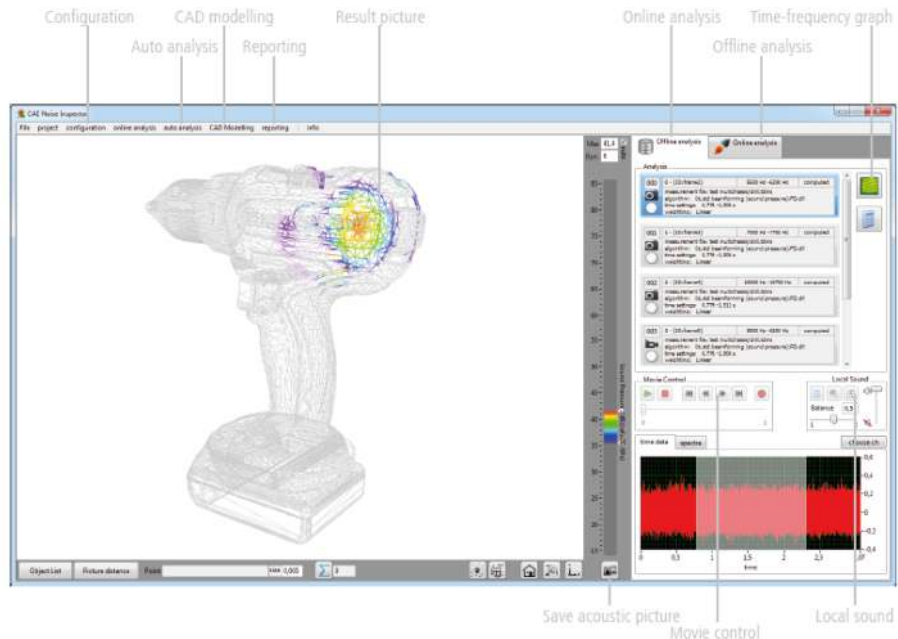
The Noise Inspector software is a turn key solution to visualize sound sources. Acoustic pictures and movies show the user fast and directly where the noise is coming from.

The user friendly interface guides the user through the whole process from data acquisition through analysis to reporting. We implemented in the software many well-known and new algorithms for getting detailed pictures. A comprehensive reporting tool allows the user to quickly generate documentation and visualization of the results.

The Noise Inspector Software is not a closed software solution. The export possibility allows the usage of the results and measurements on different software platforms. The raw data files and the result files are stored on the hard disc in the TDMS-file format from National Instruments and can be read in external software easily.

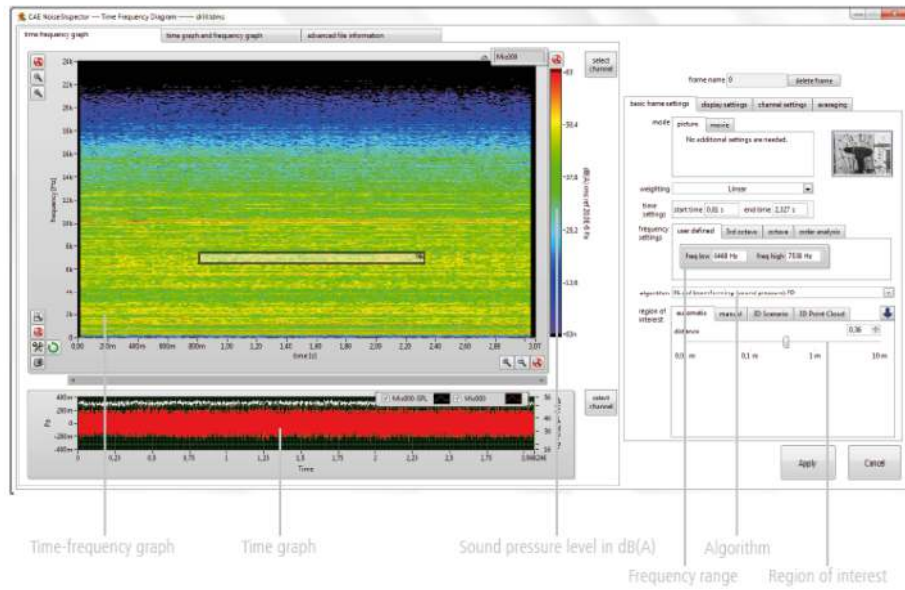
The open LabVIEW and Matlab interface provides a simple way for our customers to develop their own algorithms and to integrate these into the Noise Inspector, which is often used for research properties.

### MAIN INTERFACE OF THE NOISE INSPECTOR

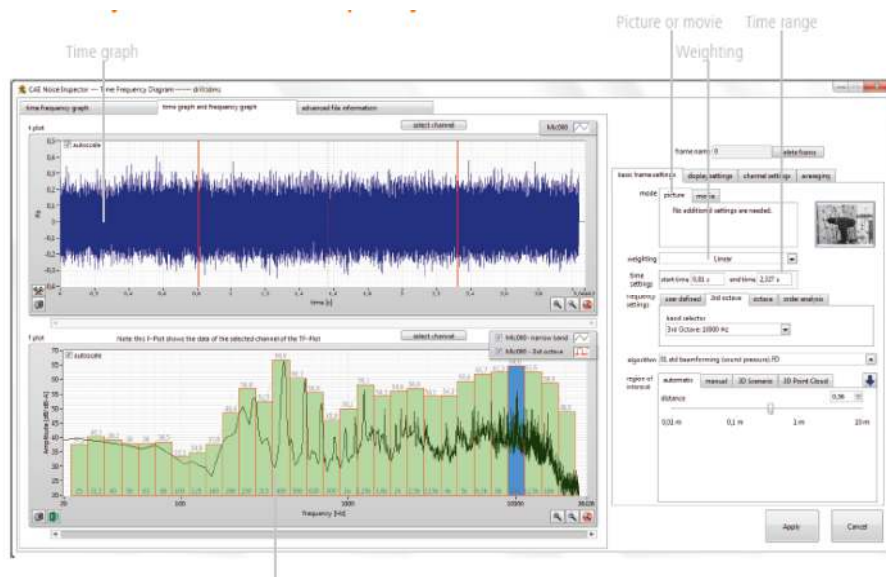




## PRE-ANALYSIS IN TIME-FREQUENCY DOMAIN



## PRE-ANALYSIS IN TIME AND FREQUENCY DOMAIN



## WIDE SELECTION OF ALGORITHMS

The Noise Inspector software comes with the largest range of algorithms available on the market. You can choose between standard beamforming or high resolution beamforming algorithms for far field measurements.

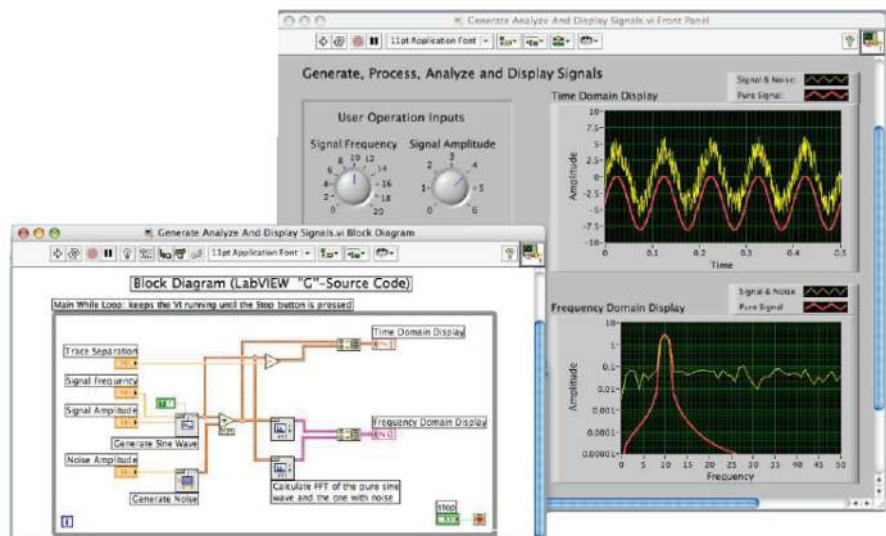
If you are facing lower frequency sources the Noise Inspector can be used for acoustic holography measurements (with the Spider array) or intensity mapping tasks (with specific intensity arrays), as well the user is able to design own analysis algorithms and implement them via the LabVIEW interface for plugins.

### ALGORITHMS FROM 40 Hz

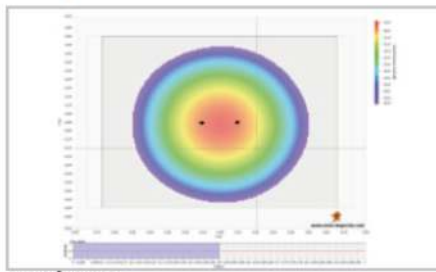
- SONAH (with the Spider array) – Statistically Optimized Near field Acoustic Holography
- Intensity (with specific intensity arrays) – Online Intensity, Intensity mapping method, 3D intensity mapping (3D vectors)

### ALGORITHMS FROM 500 Hz

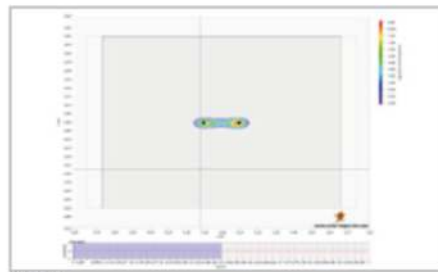
- Standard Beamforming - very fast and robust
- Deconvolution algorithms
  - CLEAN SC
  - MUSIC (Multiple Signal Classification)
  - CAPON
  - DAMAS (Deconvolution Approach for the Mapping of Acoustic Sources)
  - Orthogonal Beamforming
  - And others
- Real 3D beamforming - object is inside of the microphone array
- Rotating beamforming - for fast rotating parts e.g. fans
- “user” - interface for your own methods



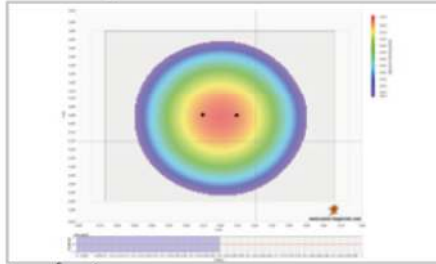
# ADVANCED HD ALGORITHMS



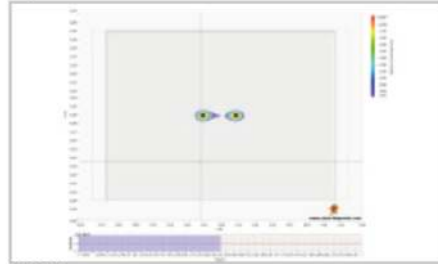
Beamforming



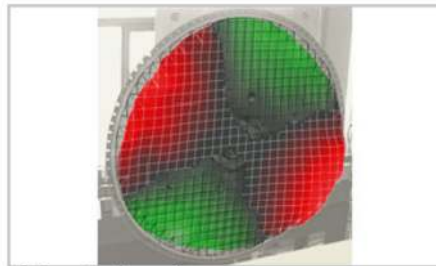
Capon



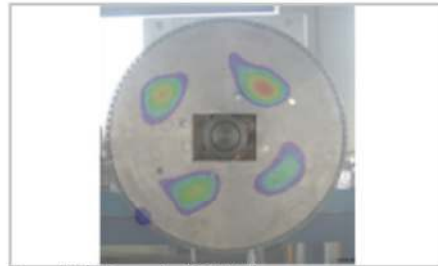
Beamforming



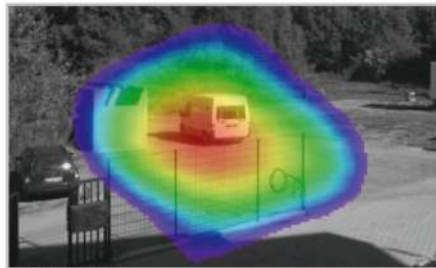
MUSIC



3D Scanning laser vibrometry



Acoustic holography (SONAH)



Beamforming



Clean SC

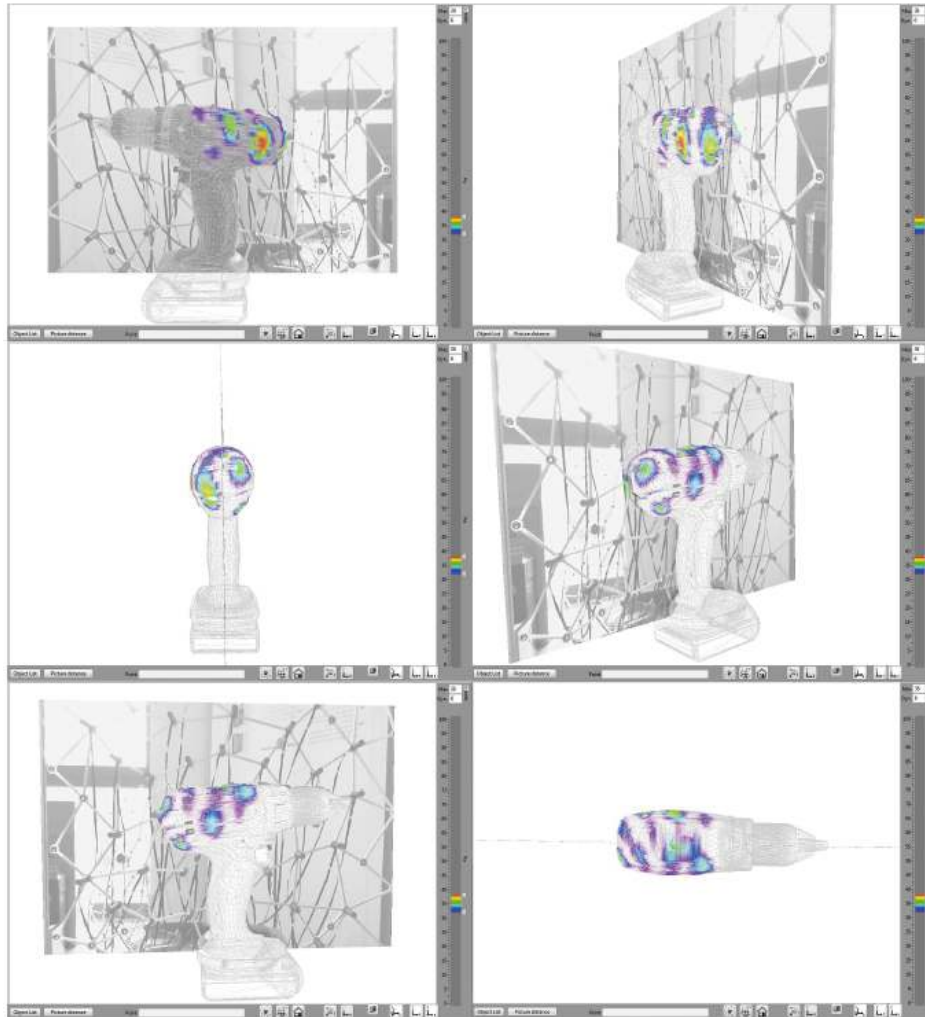
## UNIQUE REAL3D BEAMFORMING

The Noise Inspector solution offers worldwide unique 3D beamforming.

The object is surrounded by microphone arrays and is therefore measured from all sides. The results are real 3D measurement results which are projected on the 3D model.

Only one measurement shows the complete acoustic emission of the measured object. There is no limit in the microphone array size - from a small cube of 800 mm x 800 mm x 800 mm up to a complete anechoic chamber.

Results are in high resolution in all dimensions.



## THE POWERFUL DIGITAL FRONTEND

---

The powerful I<sup>2</sup>S-frontend is robust and light weight. The on-board real-time processor and FPGA guarantee the highest accuracy of the measured data. By synchronizing frontends the system can be extended to more than 1000 channels or measure the RPM of a rotating system simultaneously. Therefore the frontend has a trigger channel and an RPM channel integrated.

The Frontend streams the acquired data of the microphones through high speed Ethernet in real time to the host computer.

### MAIN FEATURES

- Digital
- Light weight
- Robust
- Expandable
- Trigger channel
- RPM channel
- Battery option
- Fanless
- Synchronized multi chassis applications
- Up to more than 1000 microphone channels



## PACKAGES

### OVERALL SPECIFICATIONS

All Acoustic Camera packages contain:

- One Digital Real-Time I<sup>2</sup>S Front-end
- One Noise Inspector Software Main Package (only Beamforming, only 2D) with dongle
- One antenna with microphones

### AVAILABLE KITS

	CAM3001000 16ch Noise Inspector Mobile	CAM3002000 40ch Noise Inspector Spider	CAM3003000 40ch Noise Inspector Bionic S	CAM3004000 40ch Noise Inspector Bionic L	CAM3005000 80ch Noise Inspector Spider	CAM3006000 80ch Noise Inspector Bionic XL
Number of I <sup>2</sup> S Front-End	1	1	1	1	2	2
Hardware Option: Multichassis functionality (and Trigger and Tacho)	○	○	○	○	●	●
Hardware Option: integrated battery for I <sup>2</sup> S						
Noise Inspector Software Main Package (only Beamforming, only 2D)	●	●	●	●	●	●
Software Option: High Resolution Algorithms	○	●	●	●	●	●
Software Option: 3D Beamforming	○	○	○	○	○	○
Software Option: Order Analysis	○	○	○	○	○	○
Mobile Array with 16 microphones	●	○	○	○	○	○
Spider Array with 40 microphones	○	●	○	○	○	○
Spider Array with 80 microphones	○	○	○	○	●*	○
Bionic Array S with 40 microphones	○	○	●	○	○	○
Bionic Array L with 40 microphones	○	○	○	●	○	○
Bionic Array XL with 80 microphones	○	○	○	○	○	●

● Included ○ Option

●\* The CAM3005000 kit contains 2 "40 microphones spider arrays"

### ADDITIONAL 3D ARRAYS

Additionally to the standard packages, 3D arrays can be offered, on a customization principle.

For instance:

- splitting of one Spider array into several arrays
- assembly of several Spider arrays
- Customized 3D arrays
- Complete room 3D array

# TECHNICAL SPECIFICATIONS

## I<sup>2</sup>S-FRONTEND

### Digital data acquisition

Channels: 40  
Sample rate: 48 kHz  
Resolution: 24 bits  
Synchronous sampling

### Weight and dimensions

Length: 230mm  
Width: 185 mm  
Height: 58 mm  
Weight: 2kg

### Power

Power supply: 9-30V DC  
Power consumption: < 5W  
Battery option: Yes



## BIONIC ARRAY S

### Main Features

Integrated design  
High resolution  
High dynamic range  
Very small package volume  
Designed for farfield measurement (Beamforming)  
From 1000 Hz

### MEMS-Microphones

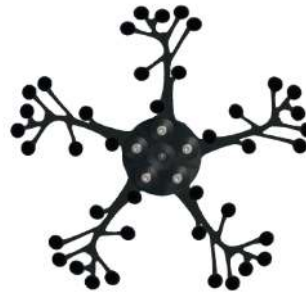
Number: 40  
Resolution: 24 bits  
Sample rate: 48kHz  
Interface: I<sup>2</sup>S  
Dynamic range: 33-120 dB  
Flat frequency response ( $\pm 3$  dB): 60Hz-15kHz

### Weight and dimensions

Material: Composite material  
Diameter: 600mm  
Weight: 2.5 kg  
Whole system packaging: case 79.5 x 52 x 39.4. cm

### Accessories

Aluminium Tripod



## BIONIC ARRAY L AND XL

### Main Features

Integrated design  
High resolution  
High dynamic range (the dynamic range is even further increased with XL)  
Small package volume  
Designed for farfield measurement (Beamforming)  
From 300 Hz (for L and XL)

### MEMS-Microphones

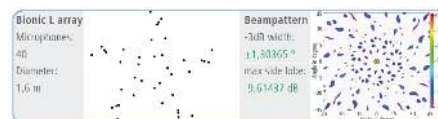
Number: 40(L) or 80(XL)  
Resolution: 24 bits  
Sample rate: 48kHz  
Interface: I<sup>2</sup>S  
Dynamic range: 33-120 dB  
Flat frequency response ( $\pm 3$  dB): 60Hz-15kHz

### Weight and dimensions

Material: Composite material  
Diameter: 1600mm (L) or 1700mm (XL)  
Weight: 3.5 kg (L) or 4 kg (XL)  
Whole system packaging: case 95.2 x 68.9 x 36.5 cm

### Accessories

Aluminium Tripod



## MOBILE ARRAY

### Main Features

Ultramobile  
Easy to use  
Small size  
Beamforming only  
Usage from 2 kHz up to 10 kHz

### MEMS-Microphones

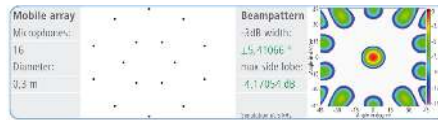
Number: 16  
Resolution: 24 bits  
Sample rate: 48kHz  
Interface: I<sup>2</sup>S  
Dynamic range: 33-120 dB  
Flat frequency response ( $\pm 3$  dB): 60Hz-15kHz

### Weight and dimensions

Material: Aluminium  
Diameter: 300mm  
Weight: 0.9 kg  
Whole system packaging: case 79.5 x 52 x 39.4. cm

### Accessories

Aluminium Tripod



## SPIDER ARRAY

### Main Features

Far field analysis (Beamforming), from 300 Hz.  
Near field analysis (Holography), from 40 Hz up to 20 kHz  
Easy to use  
Expandable array size  
Expandable amount of channels  
Changeable microphone positions

### MEMS-Microphones

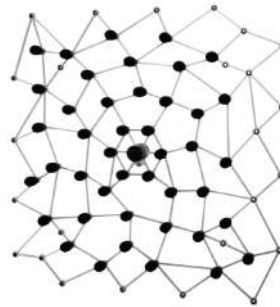
Number: 40 (expandable)  
Resolution: 24 bits  
Sample rate: 48kHz  
Interface: I<sup>2</sup>S  
Dynamic range: 33-120 dB  
Flat frequency response ( $\pm 3$  dB): 60Hz-15kHz

### Weight and dimensions

Material: Aluminium  
Standard size: 800x800 mm (expandable)  
Weight: 2.6 kg

### Accessories

Aluminium Tripod



## 3D ARRAYS

### Main Features

3D Beamforming  
3D results on 3D objects  
One measurement for the complete acoustic emission in 3D  
Stationary and non stationary processes  
Array size: small cube or complete room  
Acoustic photos and videos

### MEMS-Microphones

Number: 80-400

### Weight and dimensions

Customization-based principle  
Spider arrays assembly possibility  
Material: Aluminium frame  
Size: Variable



Example of 3D array based on an assembly of 3 Spider arrays.



## ARRAYS COMPARISON TABLE

	Mobile Array 16mics	Spider Array 40mics	Spider Array 80mics	Bionic Array S 40mics	Bionic Array L 40mics	Bionic Array XL 80mics
Beamforming 2D / Far-field measurements	●	●	●	●	●	●
Beamforming with High Resolution Algorithms / Far-field measurements	○	●	●	●	●	●
3D Beamforming	○	○	○	○	○	○
Order Analysis	○	○	○	○	○	○
Acoustic holography (SONAH) / Nearfield measurements	X	●	●	X	X	X

● Included    ○ Option    x Not possible

## **ACOEM**

### **Smart monitoring, diagnosis & solutions**

**ACOEM** offers comprehensive products and services comprising smart monitoring, diagnosis and solutions, drawing upon its unique expertise in the field of vibrations and acoustics.

ACOEM contributes to the improvement of:

- quality of life and risk prevention in urban and industrial environments
- productivity and the reliability of industrial processes
- the design of robust and high-performance products with low noise levels
- protection of sites, vehicles and people in hostile environments

With its **01dB**, **METRAVIB** and **ONEPROD** brands, **ACOEM** works with decision-makers in industry, defence and the environment throughout the world.

For more information, visit our website at [www.acoemgroup.com](http://www.acoemgroup.com)



**200 chemin des Ormeaux  
69578 LIMONEST – FRANCE**

Tel.: +33 (0)4 72 52 48 00

[www.acoemgroup.com](http://www.acoemgroup.com)

Asia

Tel. +66 (2) 7112 293 – Fax +66 (2) 7112 293

South America

Tel. + 55 (11) 5089 6460 – Fax +55 (11) 5089 6454